

## ICS SDK and Device Installers

### *ICS vs. MDSDK:*

ICS is a little different than the MDSDK. With the MDSDK, you download a version you wish to use, compile against the necessary libs/modules, then deploy the target DLLs and application to the device, and you're off and running.

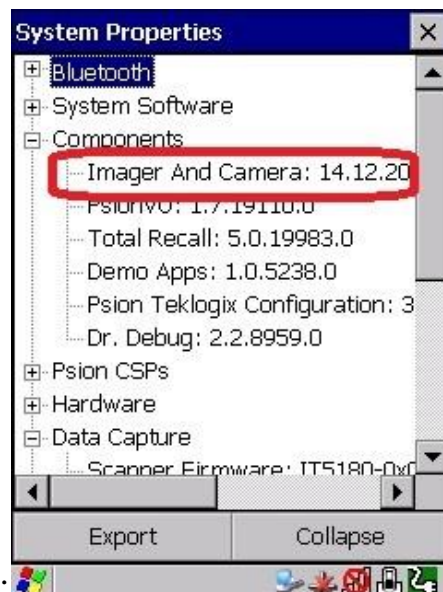
Not so with ICS.

Using the ICS (Imager Control Services) SDK to manipulate 2D imagers and cameras requires an additional installation of what we call 'Device Installers': packages (CAB or EXE) that install the necessary imager/camera drivers, services and registry keys on the target device.

### *ICS SDK and Device Installer 'Pairing':*

The first and most important rule with ICS SDK and its Device Installers is this: The ICS SDK version you choose **MUST** match the version of Device Installer implanted on the device. Using a version of the ICS SDK that differs from the device installation will eventually lead to failures.

On newer platforms (Omnii™ and EP10™) you can check the current version of the Device Installer by checking the System Properties



'Components' area:

(NOTE: legacy products such as the WAP, iKon and NEO may not have this feature)

If you have an 'Imager and Camera' entry in the 'Components' section, then the ICS Device Installer has already been installed to your Psion device.

If the ICS SDK version is different from the one that is currently installed (if at all), then simply download the matching version of the device installer to the device (which will overwrite any current installation).

### **Recommended Releases:**

On Omnii™ and EP10™ devices running Windows Mobile 6.5, the ICS Device Installer is installed automatically via the ADD-ON CAB that comes with your image (so there is no need to download a separate ICS Device Installer). That is the 'recommended' version of ICS to use against that version of the operating system, because it went through the same test process.

If, for some reason, you do not have the 'Imager and Camera' entry in the 'Components' section of the System Properties applet, then you do not have an ICS Device Installer installed to the device. This typically occurs with Omnii™ devices running Windows eMbedded CE 6. In this case, the latest ICS Device Installer/SDK is your 'recommended release'.

With that said, if there is a new feature or bug fix that you desire from the latest release of ICS, then you may override your current installation with this one (remember to also download the new ICS SDK to match it, as well as any new dependent drivers that cannot be posted publically due to license restrictions). Keep in mind, the latest revision of ICS may not have been tested against your older operating system version.

### **Legacy Devices (iKon, NEO, and Workabout PRO 2):**

ICS version **16.0** is now the highest version that could be installed to 'Legacy' devices (iKon, NEO and Workabout PRO 2).

### **The reason(s) for Device Installers:**

Why Device Installers? The MDSDK doesn't require this...

Prior to ICS version 14.8, these 'Device Installers' manifested in the form of CABs, and there was a separate CAB for each type of imager/camera that we supported. The CABs had to install a variety of drivers, services, and registry entries (quite a few, in fact). There were 'non-decoded' imagers, 'decoded' imagers, and imagers with license restrictions.

The complexity of the software required to drive imagers and cameras (as well as the amount) necessitated an installation vehicle such as CABs. Users simply couldn't drag and drop files over.

With ICS 14.8, we replaced the CABs with a single EXE installer that would detect the type of imager/camera on the device, and install the proper registry keys and drivers, removing the need for users to know the 'exact' CAB required for installation.

There is a caveat to this: imagers with license restrictions.

There are several imagers (non-decoded types such as the Intermec EA11 and the HHP imager for the iKon) that cannot be packaged or bundled with other software that has the possibility of being installed on devices which do NOT have the associated device for which it was designed. For this reason, they also may not be posted publicly. These devices will have separate EXE installers which will necessitate contact with Zebra technical support to secure the proper installation package (release notes for the download will alert users to this procedure).

### **ICS Flowchart:**

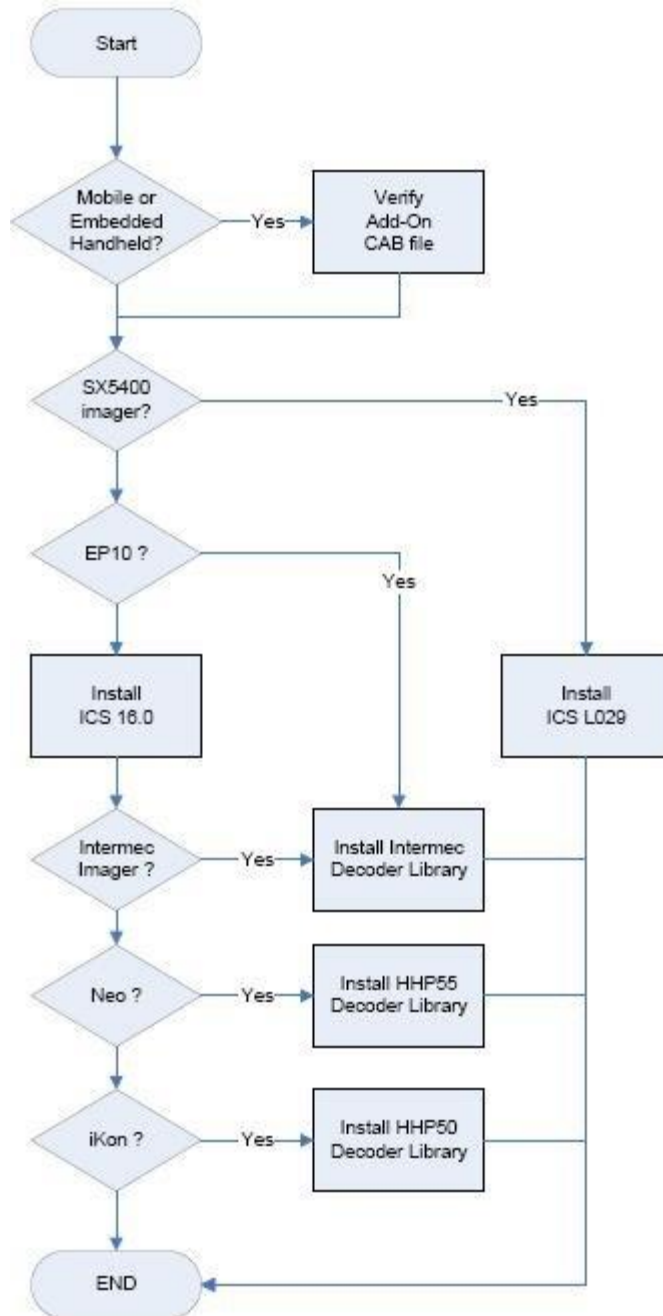
#### **Affected Handheld devices:**

Omni, EP10, Neo, Ikôn, Workabout Pro 3 (7527), 7535 G2 and 7530 G2

#### **Target imagers:**

Intermec EA20x and EA11

HHP 5X00 and 5X80



**Note:**

EP10: ICS is included in the add-on CAB (aka Psion Software Advantage) since standard HW configuration includes the Color Camera

Omnii and WAP3: Decoder library not required since the installed HHP 5X80 decoder module includes the decoder board. For more info click [here](#)

Unlike the Neo and Ikôn: Decoder library is required since the installed HHP 5X00 is a subassembly with a licensed decoder.