

# MIS/TekRF: Installation Guide

## Overview

---

The intent of this document is to highlight the environment setup steps, prior to the installation of MIS.

## Server Requirement

---

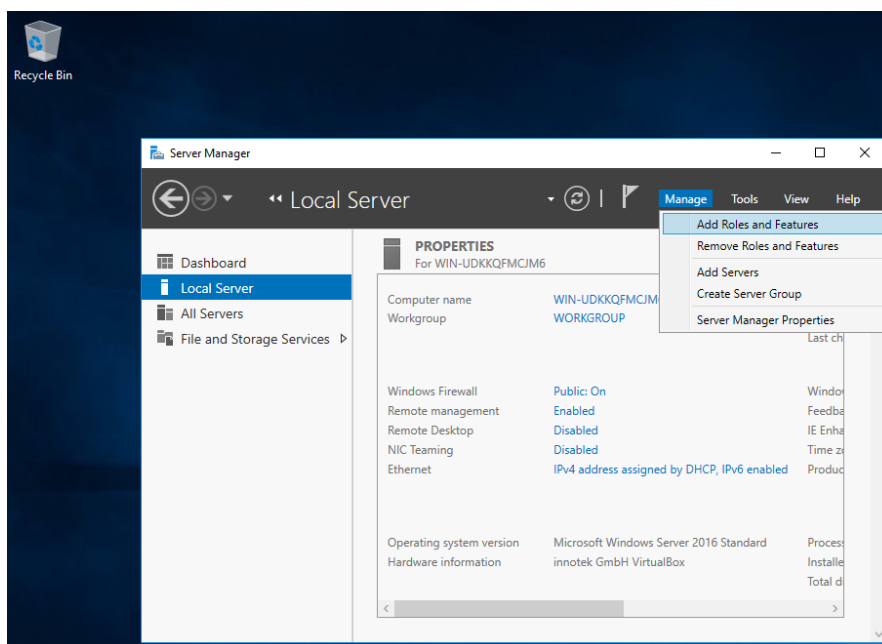
- Minimum 64-bit Server (or virtual machine)
- 8 GB or larger of RAM
- Dual core or higher
- 3 GHz or faster CPU.
- 200GB of free space on the hard drive.

## Installing and Configuring Server

### Install IIS and Microsoft Message Queue (MSMQ)

On Windows Server, you install IIS using the Server Manager. This normally starts automatically for administrative users.

1. Click the “Local Server”
2. Under “Manage”, choose “Add Roles and Features”



**Add Roles and Features Wizard** [Close] [Maximize] [Minimize]

DESTINATION SERVER  
WIN-UDKKQFMCJM6

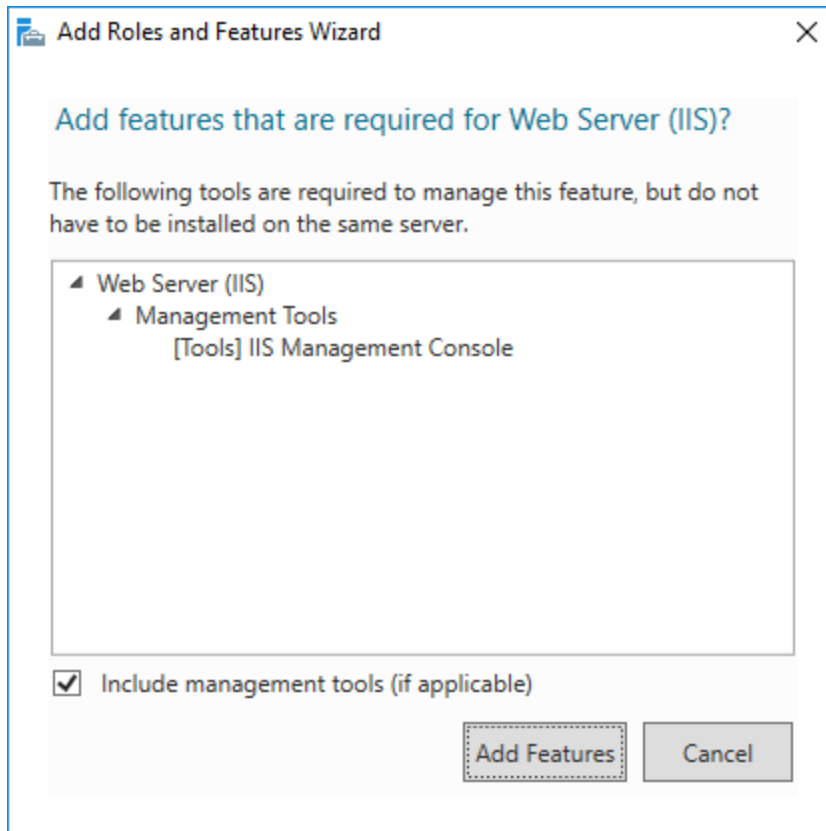
## Select server roles

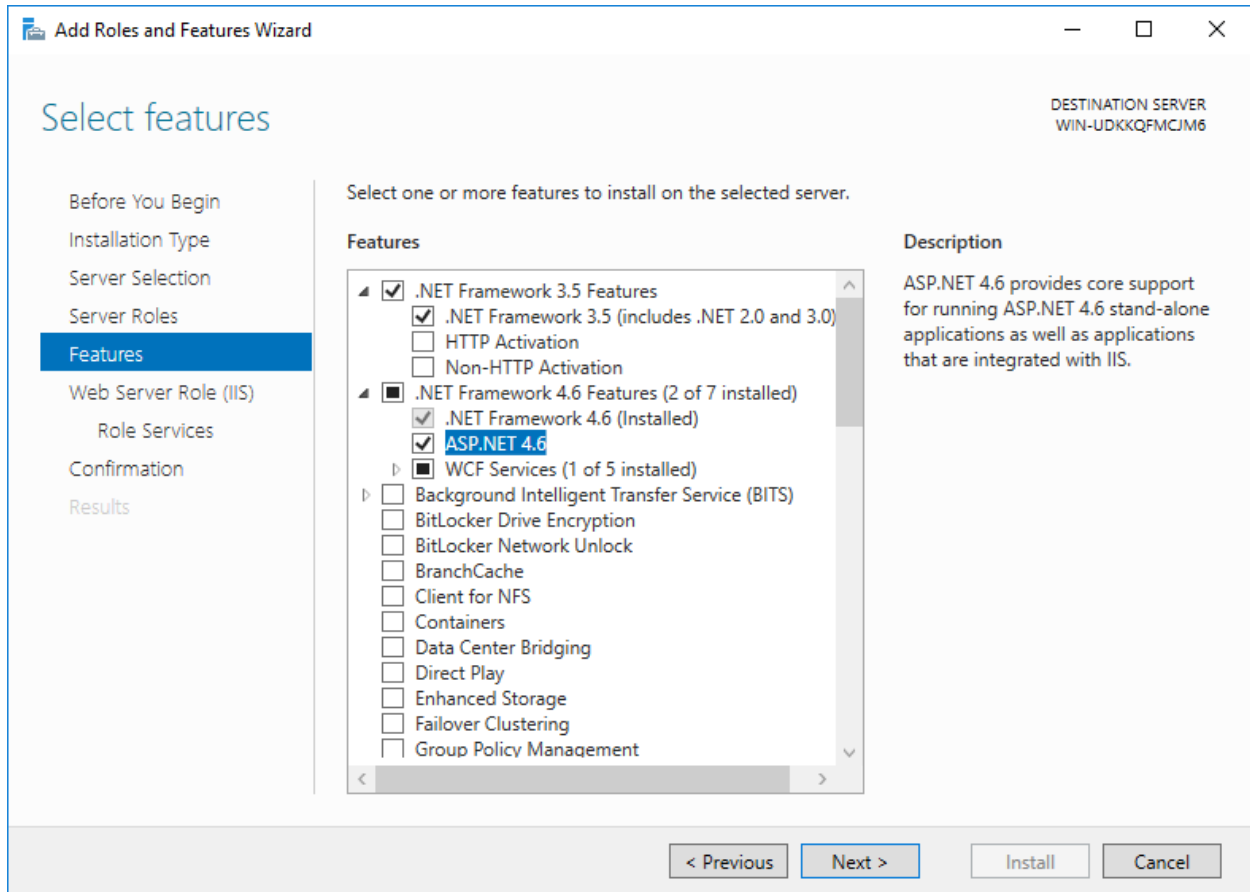
Before You Begin  
Installation Type  
Server Selection  
**Server Roles**  
Features  
Web Server Role (IIS)  
    Role Services  
Confirmation  
Results

Select one or more roles to install on the selected server.

Roles	Description
<input type="checkbox"/> Active Directory Federation Services	
<input type="checkbox"/> Active Directory Lightweight Directory Services	
<input type="checkbox"/> Active Directory Rights Management Services	
<input type="checkbox"/> Device Health Attestation	
<input type="checkbox"/> DHCP Server	
<input type="checkbox"/> DNS Server	
<input type="checkbox"/> Fax Server	
<input checked="" type="checkbox"/> File and Storage Services (1 of 12 installed)	
<input type="checkbox"/> Host Guardian Service	
<input type="checkbox"/> Hyper-V	
<input type="checkbox"/> MultiPoint Services	
<input type="checkbox"/> Network Policy and Access Services	
<input type="checkbox"/> Print and Document Services	
<input type="checkbox"/> Remote Access	
<input type="checkbox"/> Remote Desktop Services	
<input type="checkbox"/> Volume Activation Services	
<input checked="" type="checkbox"/> <b>Web Server (IIS)</b>	Web Server (IIS) provides a reliable, manageable, and scalable Web application infrastructure.
<input type="checkbox"/> Windows Deployment Services	
<input type="checkbox"/> Windows Server Essentials Experience	
<input type="checkbox"/> Windows Server Update Services	

< Previous    Next >    Install    Cancel





**Add Roles and Features Wizard**

DESTINATION SERVER  
WIN-UDKKQFMCJM6

## Select features

Before You Begin  
Installation Type  
Server Selection  
Server Roles  
**Features**  
Web Server Role (IIS)  
Role Services  
Confirmation  
Results

Select one or more features to install on the selected server.

Features	Description
<input checked="" type="checkbox"/> .NET Framework 3.5 Features	
<input checked="" type="checkbox"/> .NET Framework 3.5 (includes .NET 2.0 and 3.0)	
<input type="checkbox"/> HTTP Activation	
<input type="checkbox"/> Non-HTTP Activation	
<input checked="" type="checkbox"/> .NET Framework 4.6 Features (2 of 7 installed)	
<input checked="" type="checkbox"/> .NET Framework 4.6 (Installed)	
<input checked="" type="checkbox"/> <b>ASP.NET 4.6</b>	ASP.NET 4.6 provides core support for running ASP.NET 4.6 stand-alone applications as well as applications that are integrated with IIS.
<input checked="" type="checkbox"/> WCF Services (1 of 5 installed)	
<input type="checkbox"/> Background Intelligent Transfer Service (BITS)	
<input type="checkbox"/> BitLocker Drive Encryption	
<input type="checkbox"/> BitLocker Network Unlock	
<input type="checkbox"/> BranchCache	
<input type="checkbox"/> Client for NFS	
<input type="checkbox"/> Containers	
<input type="checkbox"/> Data Center Bridging	
<input type="checkbox"/> Direct Play	
<input type="checkbox"/> Enhanced Storage	
<input type="checkbox"/> Failover Clustering	
<input type="checkbox"/> Group Policy Management	

< Previous   Next >   Install   Cancel

**Add Roles and Features Wizard** — □ ×

DESTINATION SERVER  
WIN-UDKKQFMCJM6

## Select features

Before You Begin  
Installation Type  
Server Selection  
Server Roles  
**Features**  
Web Server Role (IIS)  
    Role Services  
Confirmation  
Results

Select one or more features to install on the selected server.

Features	Description
<input checked="" type="checkbox"/> Message Queuing	Message Queuing Server provides guaranteed message delivery, efficient routing, security, and priority-based messaging. It can be used to implement solutions for both asynchronous and synchronous messaging scenarios.
<input checked="" type="checkbox"/> Message Queuing Services	
<input checked="" type="checkbox"/> Message Queuing Server	
<input type="checkbox"/> Directory Service Integration	
<input type="checkbox"/> HTTP Support	
<input type="checkbox"/> Message Queuing Triggers	
<input type="checkbox"/> Multicasting Support	
<input type="checkbox"/> Routing Service	
<input type="checkbox"/> Message Queuing DCOM Proxy	
<input type="checkbox"/> Multipath I/O	
<input type="checkbox"/> MultiPoint Connector	
<input type="checkbox"/> Network Load Balancing	
<input type="checkbox"/> Peer Name Resolution Protocol	
<input type="checkbox"/> Quality Windows Audio Video Experience	
<input type="checkbox"/> RAS Connection Manager Administration Kit (CMA)	
<input type="checkbox"/> Remote Assistance	
<input type="checkbox"/> Remote Differential Compression	
<input type="checkbox"/> Remote Server Administration Tools	
<input type="checkbox"/> RPC over HTTP Proxv	

< Previous Next > Install Cancel

**Add Roles and Features Wizard** [Window Title Bar]

DESTINATION SERVER  
WIN-UDKKQFMCJM6

## Select features

Before You Begin  
Installation Type  
Server Selection  
Server Roles  
**Features**  
Web Server Role (IIS)  
    Role Services  
Confirmation  
Results

Select one or more features to install on the selected server.

Features	Description
<input type="checkbox"/> TFTP Client	
<input type="checkbox"/> VM Shielding Tools for Fabric Management	
<input type="checkbox"/> WebDAV Redirector	
<input type="checkbox"/> Windows Biometric Framework	
<input checked="" type="checkbox"/> Windows Defender Features (Installed)	
<input type="checkbox"/> Windows Identity Foundation 3.5	
<input type="checkbox"/> Windows Internal Database	
<input checked="" type="checkbox"/> Windows PowerShell (2 of 5 installed)	
<input type="checkbox"/> Windows Process Activation Service	
<input type="checkbox"/> Windows Search Service	
<input type="checkbox"/> Windows Server Backup	
<input type="checkbox"/> Windows Server Migration Tools	
<input type="checkbox"/> Windows Standards-Based Storage Management	
<input type="checkbox"/> Windows TIFF IFilter	
<input type="checkbox"/> WinRM IIS Extension	
<input type="checkbox"/> WINS Server	
<input type="checkbox"/> Wireless LAN Service	
<input checked="" type="checkbox"/> WoW64 Support (Installed)	
<input type="checkbox"/> XPS Viewer	

**Description**  
Message Queuing Server provides guaranteed message delivery, efficient routing, security, and priority-based messaging. It can be used to implement solutions for both asynchronous and synchronous messaging scenarios.



**Add Roles and Features Wizard** — □ ×

DESTINATION SERVER  
WIN-UDKKQFMCJM6

## Select role services

Before You Begin  
Installation Type  
Server Selection  
Server Roles  
Features  
Web Server Role (IIS)  
**Role Services**  
Confirmation  
Results

Select the role services to install for Web Server (IIS)

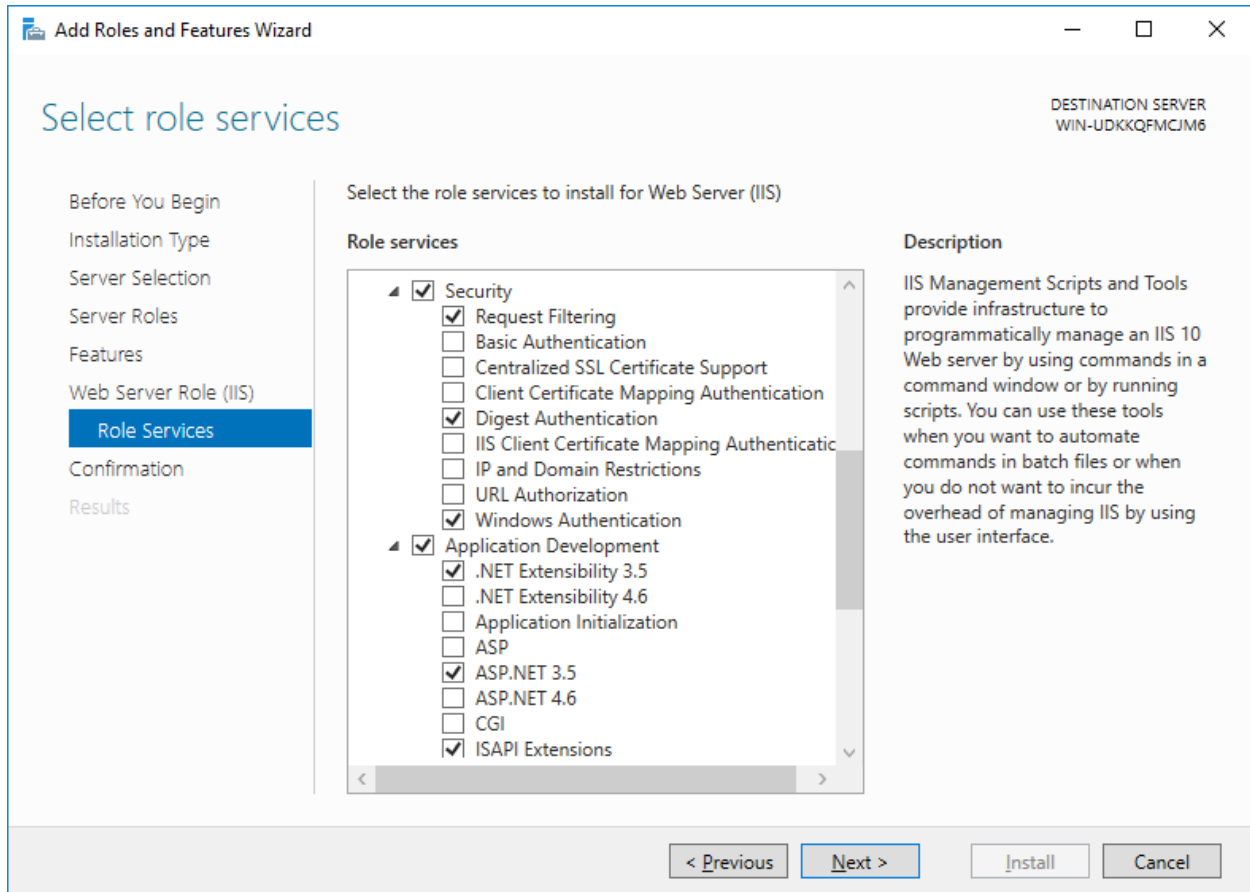
**Role services**

- Web Server
  - Common HTTP Features
    - Default Document
    - Directory Browsing
    - HTTP Errors
    - Static Content
    - HTTP Redirection
    - WebDAV Publishing
  - Health and Diagnostics
    - HTTP Logging
    - Custom Logging
    - Logging Tools
    - ODBC Logging
    - Request Monitor
    - Tracing
  - Performance
    - Static Content Compression
    - Dynamic Content Compression
  - Security

**Description**

IIS Management Scripts and Tools provide infrastructure to programmatically manage an IIS 10 Web server by using commands in a command window or by running scripts. You can use these tools when you want to automate commands in batch files or when you do not want to incur the overhead of managing IIS by using the user interface.

< Previous Next > Install Cancel



**Add Roles and Features Wizard**

DESTINATION SERVER  
WIN-UDKKQFMCJM6

### Select role services

Before You Begin  
Installation Type  
Server Selection  
Server Roles  
Features  
Web Server Role (IIS)  
**Role Services**  
Confirmation  
Results

Select the role services to install for Web Server (IIS)

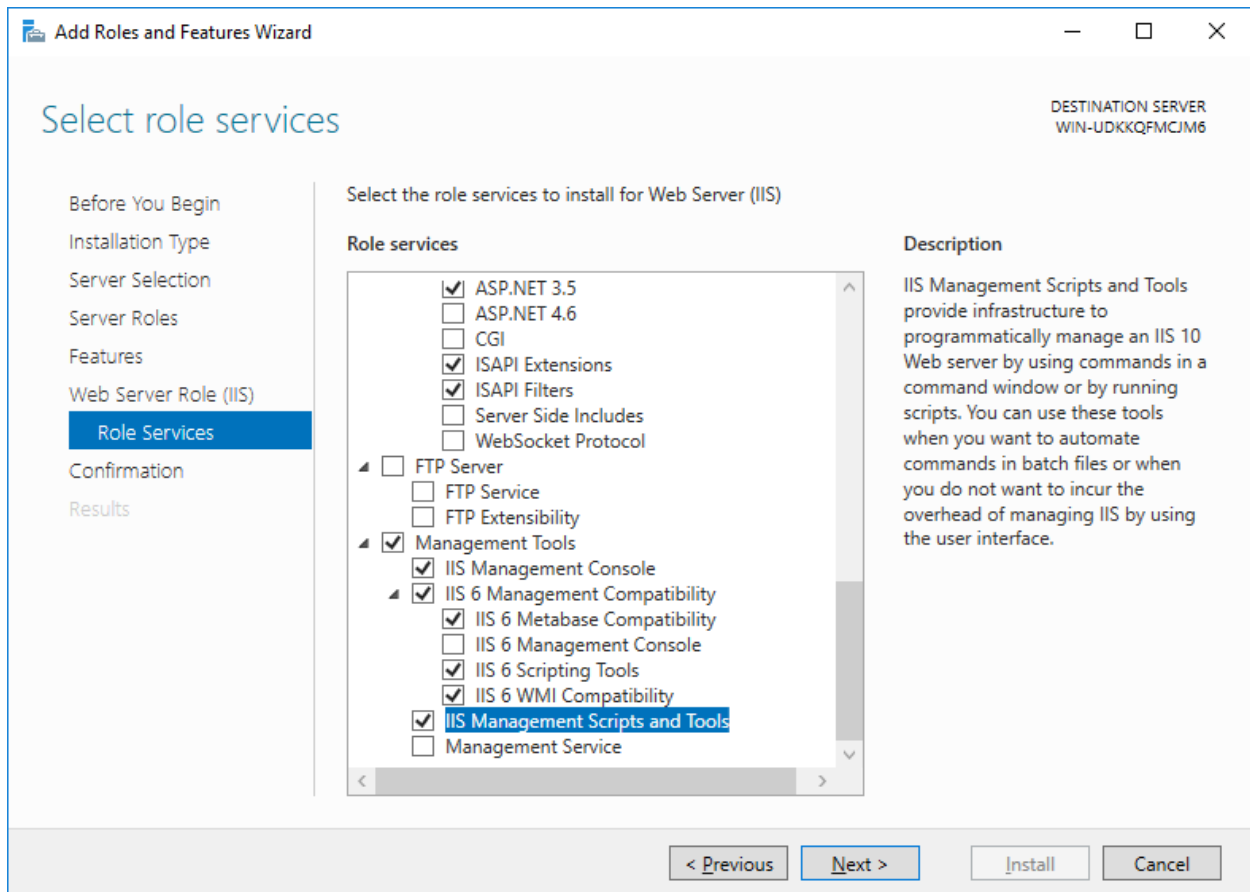
**Role services**

- Security
  - Request Filtering
  - Basic Authentication
  - Centralized SSL Certificate Support
  - Client Certificate Mapping Authentication
  - Digest Authentication
  - IIS Client Certificate Mapping Authentication
  - IP and Domain Restrictions
  - URL Authorization
  - Windows Authentication
- Application Development
  - .NET Extensibility 3.5
  - .NET Extensibility 4.6
  - Application Initialization
  - ASP
  - ASP.NET 3.5
  - ASP.NET 4.6
  - CGI
  - ISAPI Extensions

**Description**

IIS Management Scripts and Tools provide infrastructure to programmatically manage an IIS 10 Web server by using commands in a command window or by running scripts. You can use these tools when you want to automate commands in batch files or when you do not want to incur the overhead of managing IIS by using the user interface.

< Previous   Next >   Install   Cancel



**Add Roles and Features Wizard** DESTINATION SERVER  
WIN-UDKKQFMCJM6

## Select role services

Before You Begin  
Installation Type  
Server Selection  
Server Roles  
Features  
Web Server Role (IIS)  
**Role Services**  
Confirmation  
Results

Select the role services to install for Web Server (IIS)

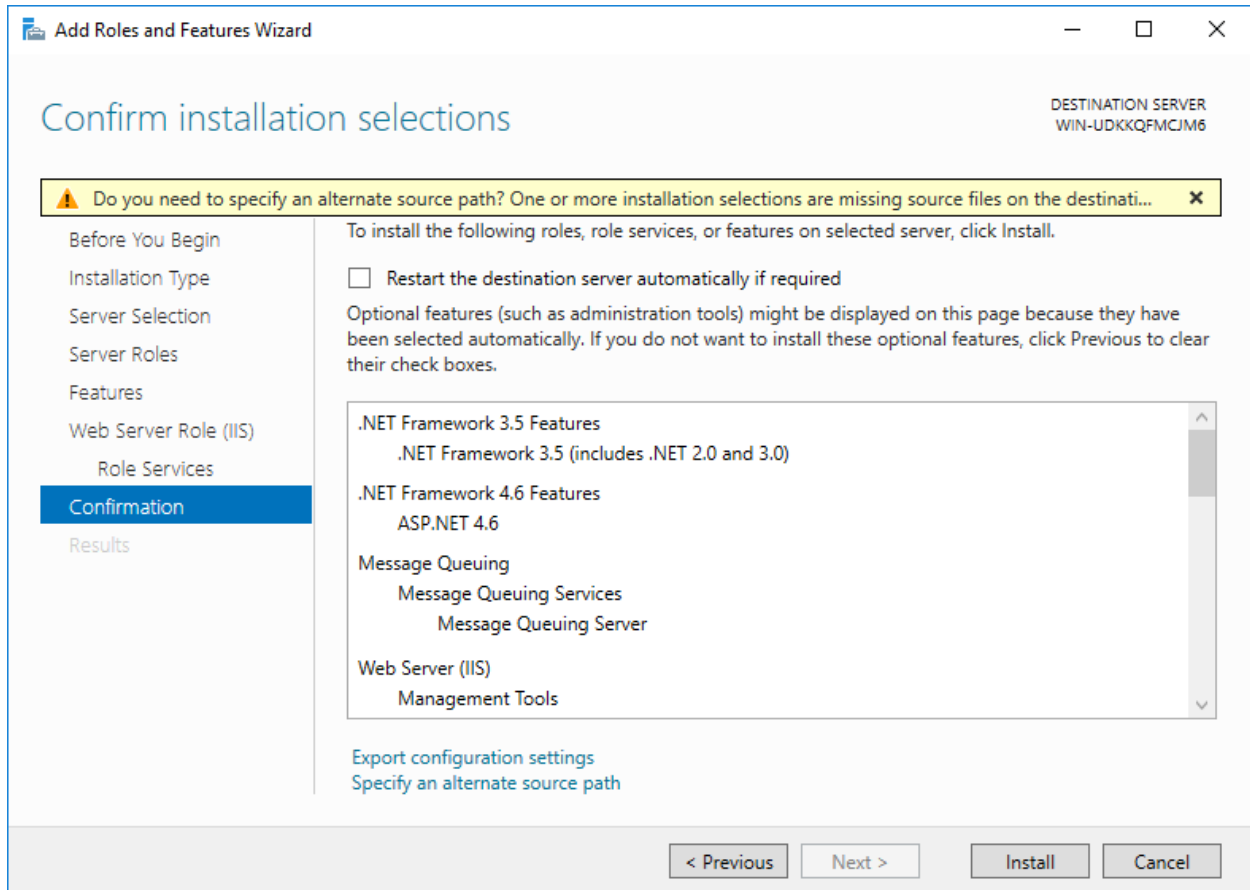
**Role services**

- ASP.NET 3.5
- ASP.NET 4.6
- CGI
- ISAPI Extensions
- ISAPI Filters
- Server Side Includes
- WebSocket Protocol
- FTP Server
  - FTP Service
  - FTP Extensibility
- Management Tools
  - IIS Management Console
    - IIS 6 Management Compatibility
      - IIS 6 Metabase Compatibility
      - IIS 6 Management Console
      - IIS 6 Scripting Tools
      - IIS 6 WMI Compatibility
    - IIS Management Scripts and Tools
    - Management Service

**Description**

IIS Management Scripts and Tools provide infrastructure to programmatically manage an IIS 10 Web server by using commands in a command window or by running scripts. You can use these tools when you want to automate commands in batch files or when you do not want to incur the overhead of managing IIS by using the user interface.

< Previous   Next >   Install   Cancel



**Add Roles and Features Wizard**

DESTINATION SERVER  
WIN-UDKKQFMCJM6

**Confirm installation selections**

**Warning:** Do you need to specify an alternate source path? One or more installation selections are missing source files on the destination server. ✕

To install the following roles, role services, or features on selected server, click Install.

Restart the destination server automatically if required

Optional features (such as administration tools) might be displayed on this page because they have been selected automatically. If you do not want to install these optional features, click Previous to clear their check boxes.

- .NET Framework 3.5 Features
  - .NET Framework 3.5 (includes .NET 2.0 and 3.0)
- .NET Framework 4.6 Features
  - ASP.NET 4.6
- Message Queuing
  - Message Queuing Services
  - Message Queuing Server
- Web Server (IIS)
  - Management Tools

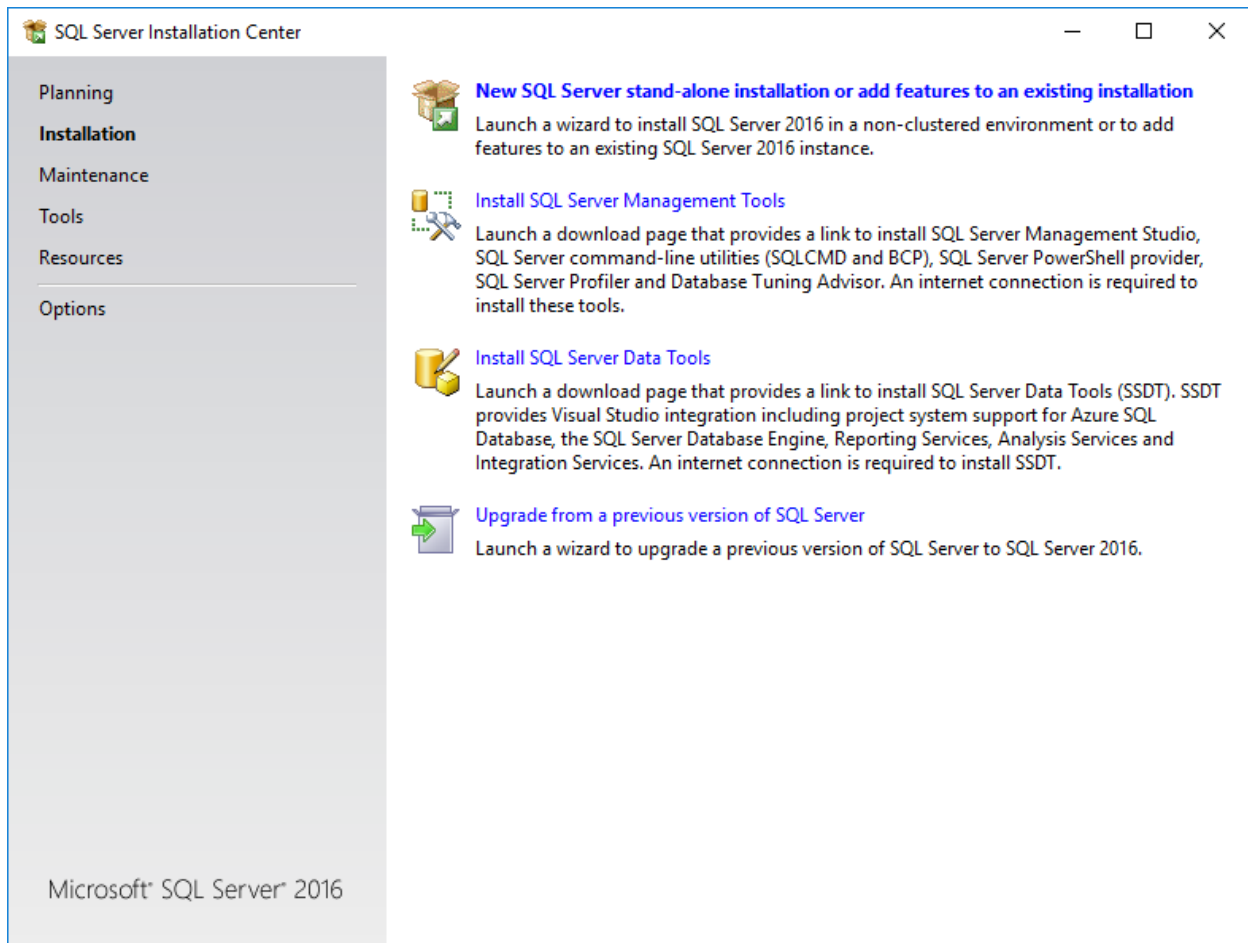
[Export configuration settings](#)  
[Specify an alternate source path](#)

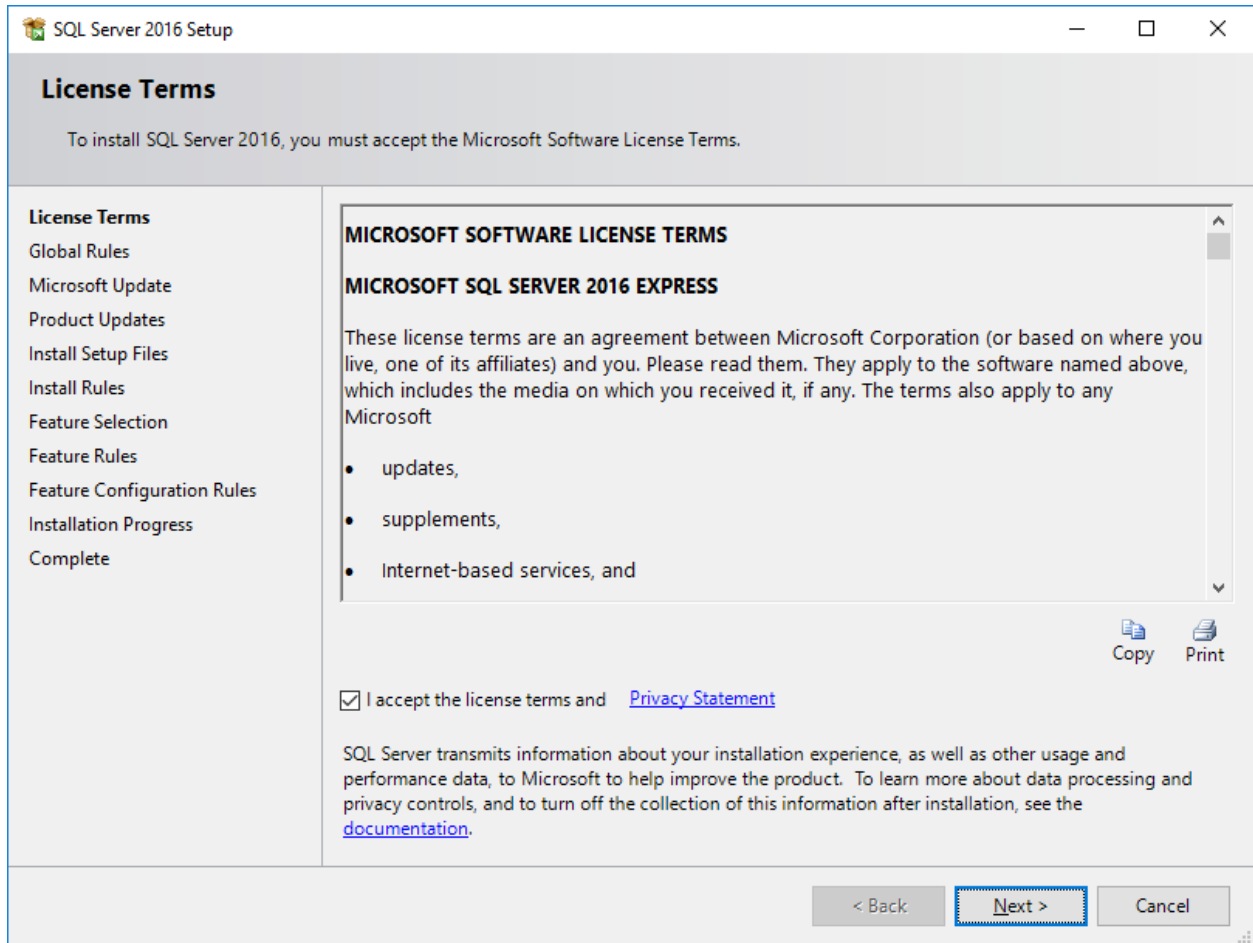
< Previous    Next >    Install    Cancel

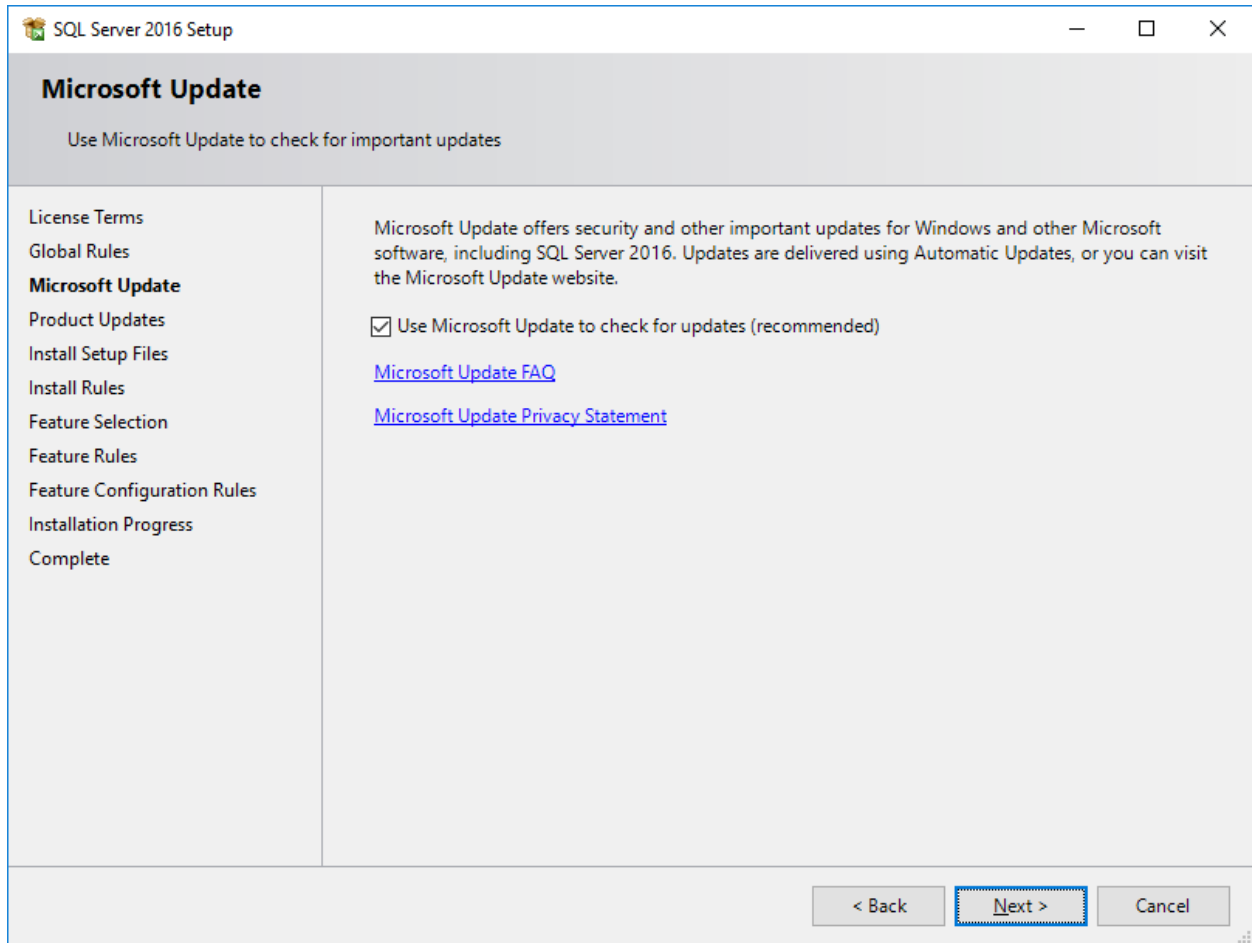
## SQL Server Installation

\*\*\* newer SQL Express installation screens may be different from these 2016 version installation.

- Download from an MSDN Subscription or otherwise get the SQL Server 2016 Express [with Advanced Services] and Service Pack 2 (x64) (or latest service pack).
  - In this example, we are installing onto a 64-bit machine, so we choose the 64-bit SQL Server.
  - A customer installation may use Standard or another variant of SQL Server.
  - The customer may choose a central instance of SQL Server. In this case, the SQL Connectivity Tools must be installed onto the MIS Server system.







SQL Server 2016 Setup

### Install Rules






Setup rules identify potential problems that might occur while running Setup. Failures must be corrected before Setup can continue.

License Terms  
Global Rules  
Microsoft Update  
Product Updates  
Install Setup Files  
**Install Rules**  
Feature Selection  
Feature Rules  
Instance Configuration  
Server Configuration  
Database Engine Configuration  
Reporting Services Configuration  
Consent to install Microsoft R ...  
Feature Configuration Rules  
Installation Progress  
Complete

Operation completed. Passed: 4. Failed 0. Warning 1. Skipped 0.


Hide details << Re-run

[View detailed report](#)

Rule	Status
 Fusion Active Template Library (ATL)	<a href="#">Passed</a>
 Consistency validation for SQL Server registry keys	<a href="#">Passed</a>
 Computer domain controller	<a href="#">Passed</a>
 Microsoft .NET Application Security	<a href="#">Passed</a>
 Windows Firewall	<a href="#">Warning</a>

< Back Next > Cancel

### Rule Check Result

 Rule "Windows Firewall" generated a warning.

The Windows Firewall is enabled. Make sure the appropriate ports are open to enable remote access. See the rules documentation at <http://go.microsoft.com/fwlink/?LinkId=94001> for information about ports to open for each feature.

OK

### Link for Firewall access.

<https://docs.microsoft.com/en-us/sql/sql-server/install/configure-the-windows-firewall-to-allow-sql-server-access?view=sql-server-2017>



SQL Server 2016 Setup

## Feature Selection

Select the Express features to install.

License Terms

Global Rules

Microsoft Update

Product Updates

Install Setup Files

Install Rules

**Feature Selection**

Feature Rules

Instance Configuration

Server Configuration

Database Engine Configuration

Feature Configuration Rules

Installation Progress

Complete

**Features:**

**Instance Features**

Database Engine Services

SQL Server Replication

R Services (In-Database)

Full-Text and Semantic Extractions for Sea

PolyBase Query Service for External Data

Reporting Services - Native

**Shared Features**

Client Tools Connectivity

Client Tools Backwards Compatibility

Client Tools SDK

Documentation Components

SQL Client Connectivity SDK

Select All    Unselect All

Instance root directory:  ...

Shared feature directory:  ...

Shared feature directory (x86):  ...

**Feature description:**

The configuration and operation of each instance feature of a SQL Server instance is isolated from other SQL Server instances. SQL Server instances can operate side-by-side on

**Prerequisites for selected features:**

Already installed:

- Windows PowerShell 3.0 or higher
- Microsoft .NET Framework 4.6

**Disk Space Requirements**

Drive C: 1396 MB required, 40946 MB available

< Back    **Next >**    Cancel

SQL Server 2016 Setup

### Instance Configuration

Specify the name and instance ID for the instance of SQL Server. Instance ID becomes part of the installation path.

- License Terms
- Global Rules
- Microsoft Update
- Product Updates
- Install Setup Files
- Install Rules
- Feature Selection
- Feature Rules
- Instance Configuration**
- Server Configuration
- Database Engine Configuration
- Feature Configuration Rules
- Installation Progress
- Complete

Default instance

Named instance:

---

Instance ID:

---

SQL Server directory: C:\Program Files\Microsoft SQL Server\MSSQL13.MSSQLSERVER

Installed instances:

Instance Name	Instance ID	Features	Edition	Version
---------------	-------------	----------	---------	---------

< Back   **Next >**   Cancel

SQL Server 2016 Setup

## Server Configuration

Specify the service accounts and collation configuration.

- License Terms
- Global Rules
- Microsoft Update
- Product Updates
- Install Setup Files
- Install Rules
- Feature Selection
- Feature Rules
- Instance Configuration
- Server Configuration**
- Database Engine Configuration
- Feature Configuration Rules
- Installation Progress
- Complete

Service Accounts Collation

Microsoft recommends that you use a separate account for each SQL Server service.

Service	Account Name	Password	Startup Type
SQL Server Database Engine	NT Service\MSSQLSERVER		Automatic
SQL Server Browser	NT AUTHORITY\LOCAL ...		Disabled

Grant Perform Volume Maintenance Task privilege to SQL Server Database Engine Service

This privilege enables instant file initialization by avoiding zeroing of data pages. This may lead to information disclosure by allowing deleted content to be accessed.

[Click here for details](#)

Customize the SQL Server 2016 Database Engine Collation

Select the collation you would like to use:

Windows collation designator and sort order

Collation designator: Albanian

Binary  Binary-code point

Case-sensitive  Kana-sensitive

Accent-sensitive  Width-sensitive

Supplementary characters

SQL collation, used for backwards compatibility

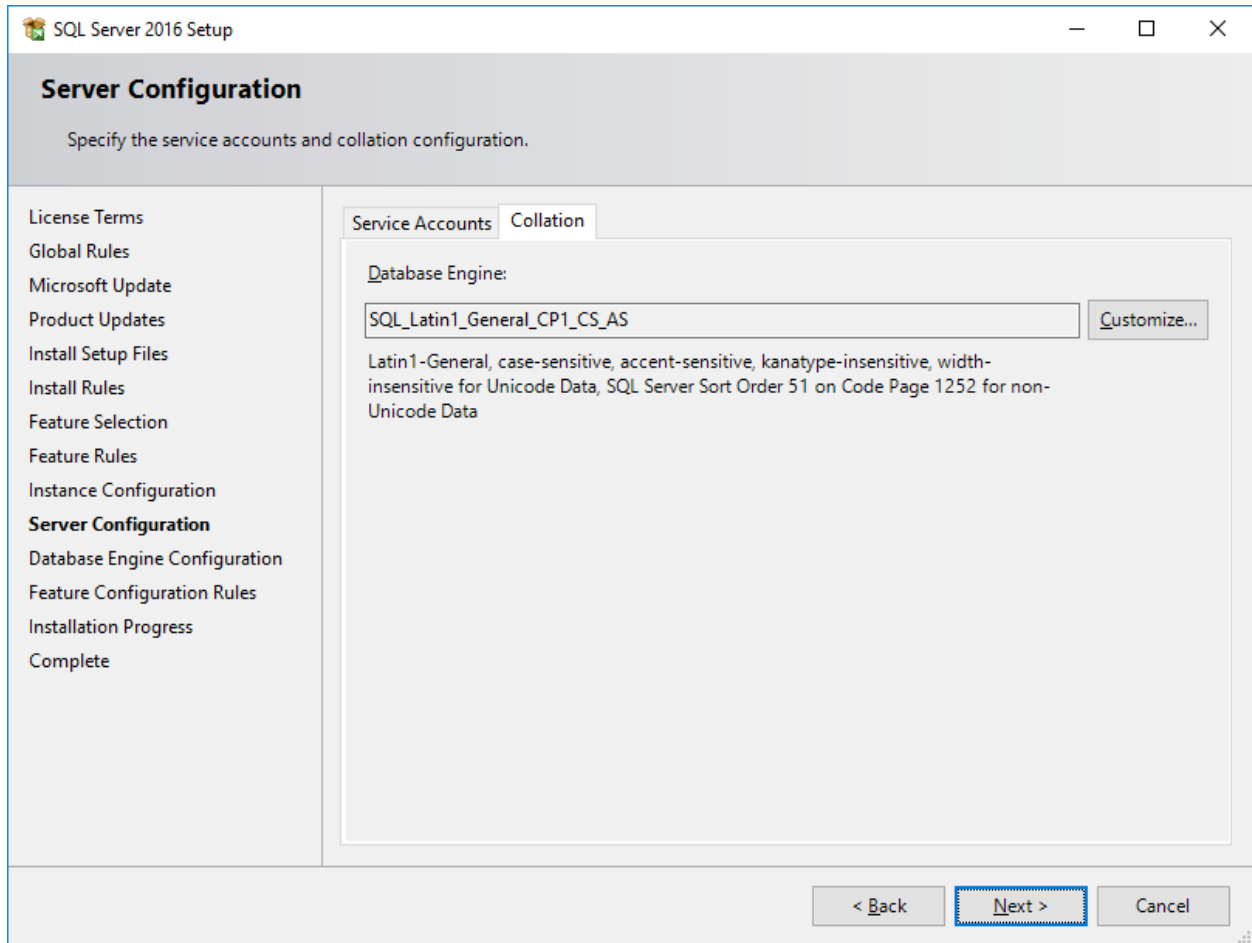
SQL\_Hungarian\_CP1250\_CS\_AS  
SQL\_Icelandic\_Pref\_CP1\_CI\_AS  
SQL\_Latin1\_General\_CP1\_CI\_AI  
SQL\_Latin1\_General\_CP1\_CI\_AS  
**SQL\_Latin1\_General\_CP1\_CS\_AS**

Collation description:

Latin1-General, case-sensitive, accent-sensitive, kanatype-insensitive, width-insensitive for Unicode Data, SQL Server Sort Order 51 on Code Page 1252 for non-Unicode Data

**Note** - The value selected above is chosen for test machine purposes.

MOST customer installing TekRF/TekConsole will prefer the original SQL\_Latin1\_General\_CP1\_CI\_AS (Case-Insensitive) option, as it means they don't have to worry about case-sensitivity with operator/user names.



SQL Server 2016 Setup

### Database Engine Configuration

Specify Database Engine authentication security mode, administrators, data directories and TempDB settings.

- License Terms
- Global Rules
- Microsoft Update
- Product Updates
- Install Setup Files
- Install Rules
- Feature Selection
- Feature Rules
- Instance Configuration
- Server Configuration
- Database Engine Configuration**
- Feature Configuration Rules
- Installation Progress
- Complete

Server Configuration | Data Directories | TempDB | User Instances | FILESTREAM

Specify the authentication mode and administrators for the Database Engine.

Authentication Mode

Windows authentication mode

Mixed Mode (SQL Server authentication and Windows authentication)

Specify the password for the SQL Server system administrator (sa) account.

Enter password:

Confirm password:

Specify SQL Server administrators

WIN-UDKKQFMCJM6\Administrator (Administrator)	SQL Server administrators have unrestricted access to the Database Engine.
BUILTIN\Administrators (Administrators)	

Add Current User | Add... | Remove

< Back | Next > | Cancel

SQL Server 2016 Setup

## Complete

Your SQL Server 2016 installation completed successfully with product updates.

- License Terms
- Global Rules
- Microsoft Update
- Product Updates
- Install Setup Files
- Install Rules
- Feature Selection
- Feature Rules
- Instance Configuration
- Server Configuration
- Database Engine Configuration
- Feature Configuration Rules
- Installation Progress
- Complete**

Information about the Setup operation or possible next steps:

Feature	Status
✓ Client Tools Connectivity	Succeeded
✓ Client Tools SDK	Succeeded
✓ Client Tools Backwards Compatibility	Succeeded
✓ Database Engine Services	Succeeded
✓ SQL Browser	Succeeded
✓ Documentation Components	Succeeded

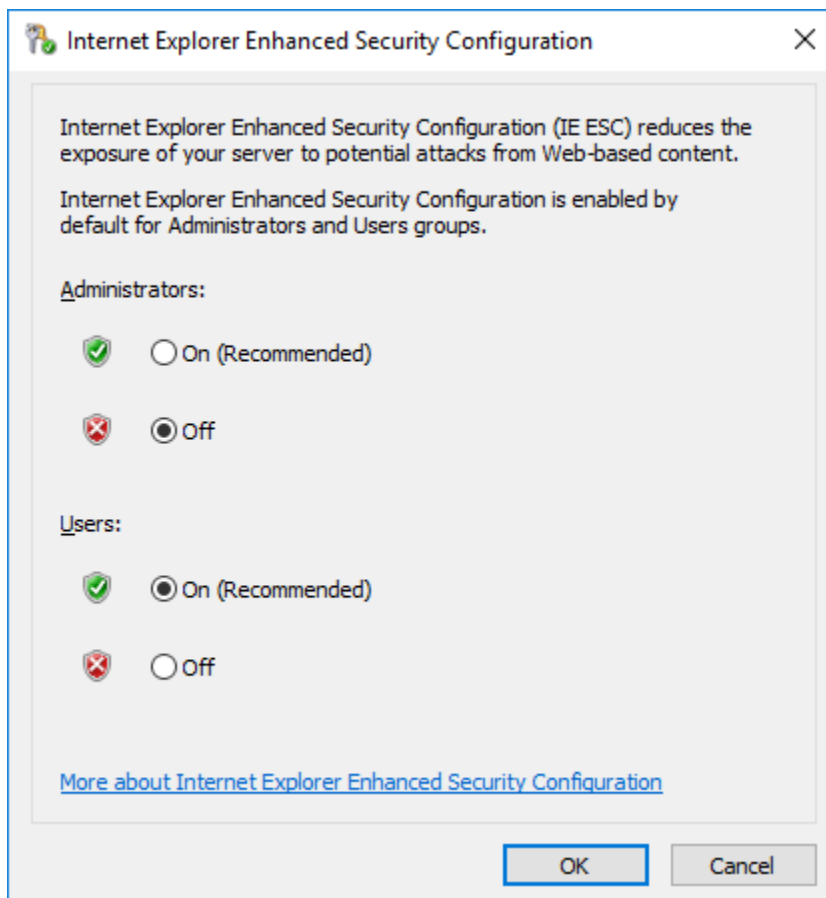
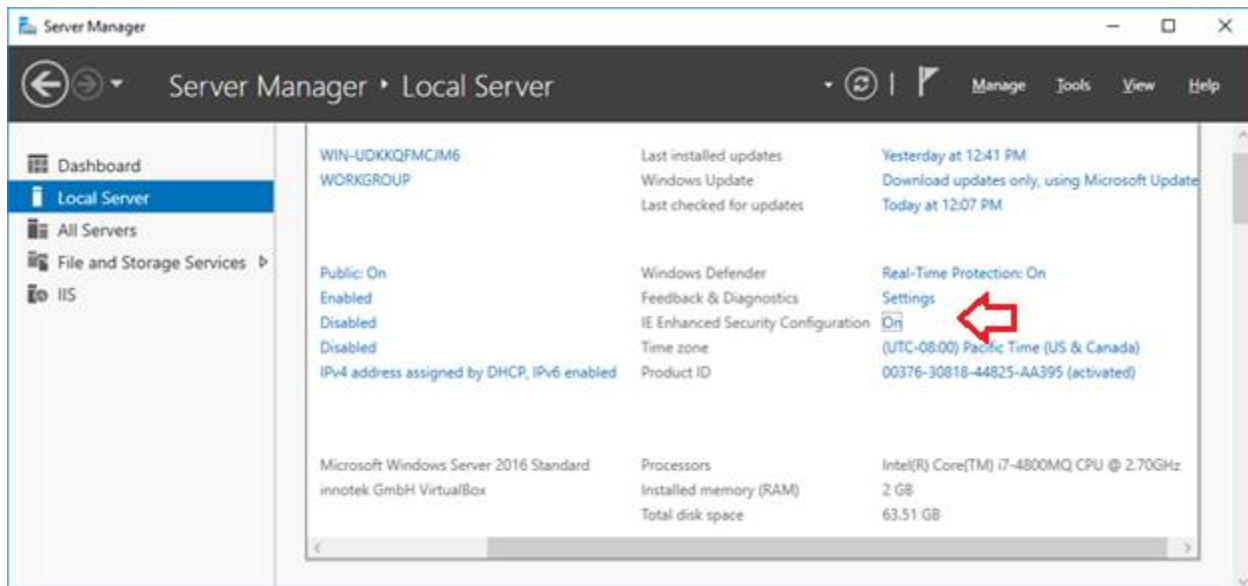
Details:

**Product Update:**  
Product Update has successfully applied KB 4052908 <<http://support.microsoft.com/?id=4052908>>. These updates have set the patch level of the Setup operation to 13.2.5026.0.

Summary log file has been saved to the following location:  
[C:\Program Files\Microsoft SQL Server\130\Setup Bootstrap\Log\20181004\\_161919\Summary\\_WIN-UDKKOFMCM6\\_20181004\\_161919.txt](C:\Program Files\Microsoft SQL Server\130\Setup Bootstrap\Log\20181004_161919\Summary_WIN-UDKKOFMCM6_20181004_161919.txt)

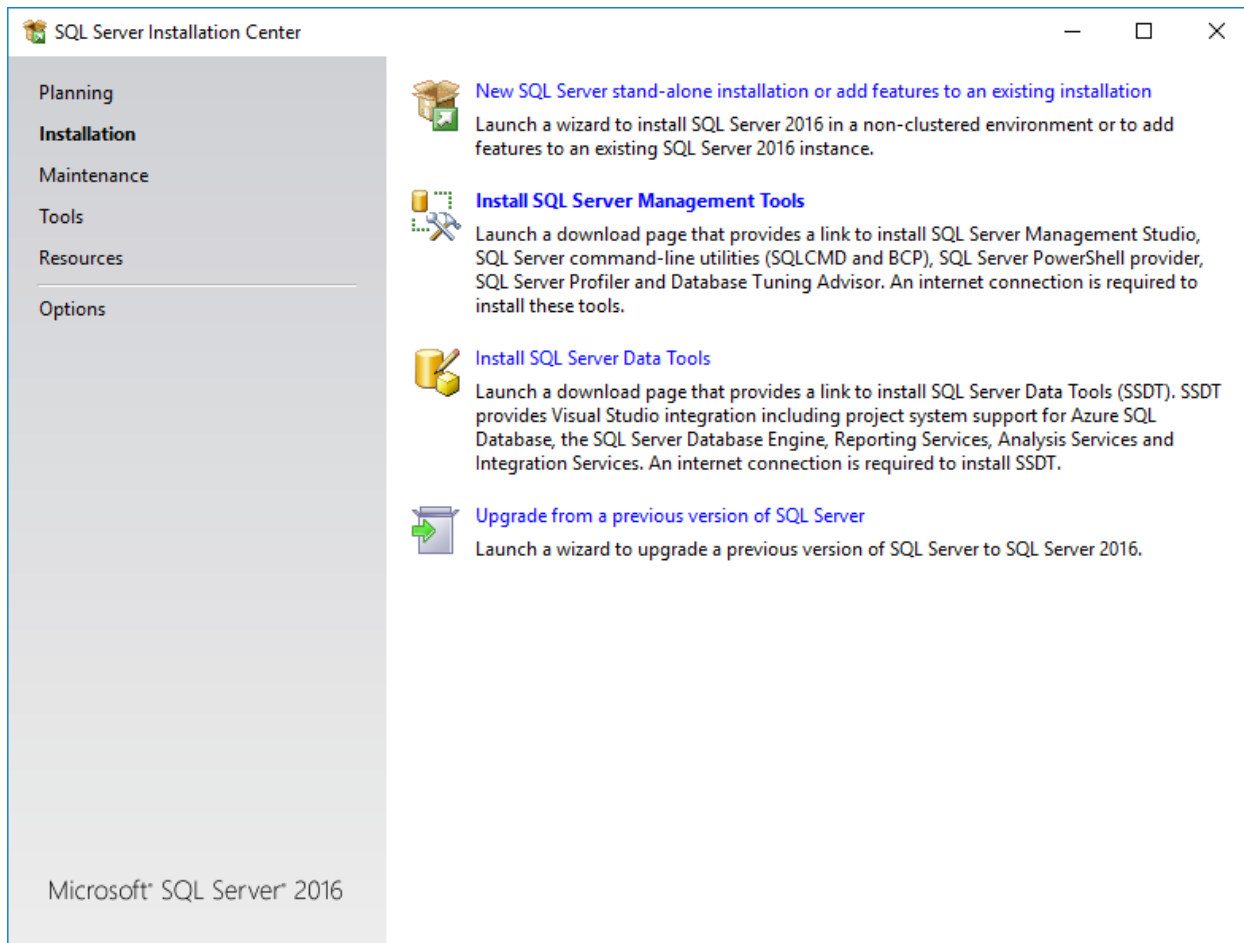
Close

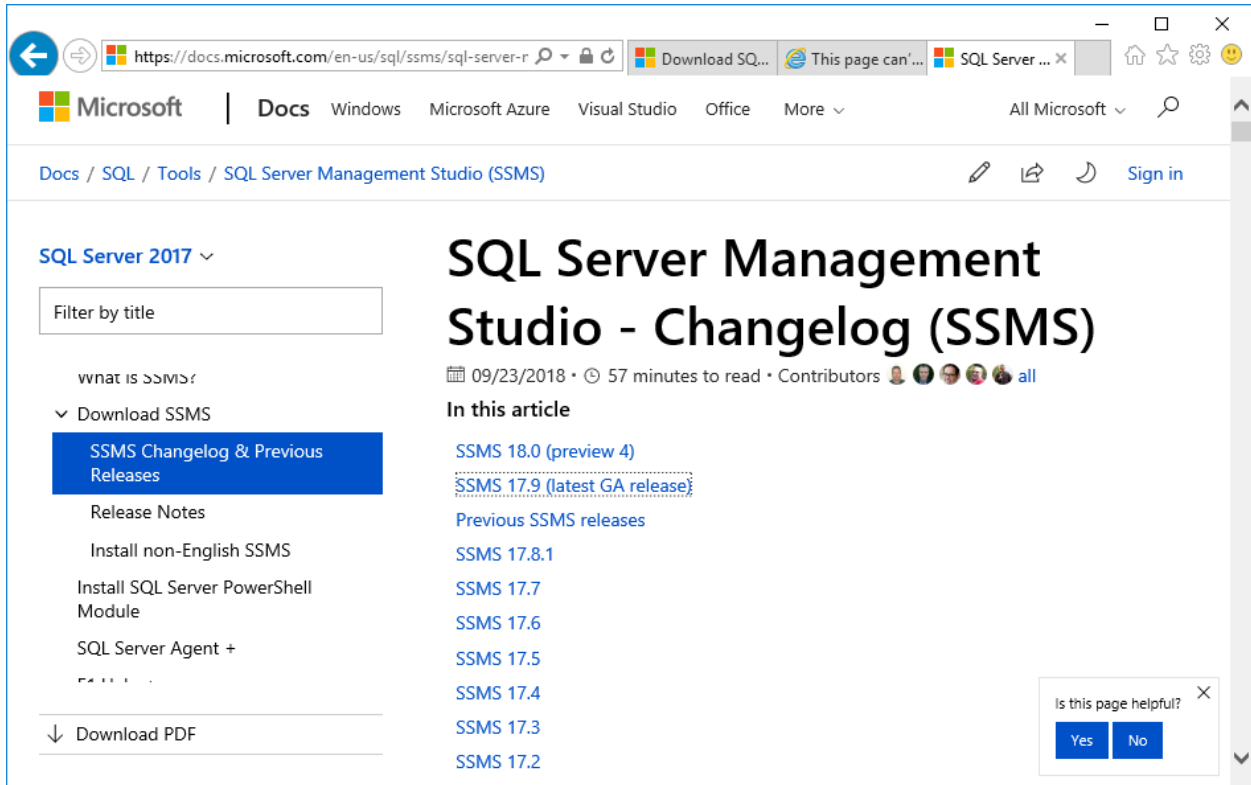
## Disable IE Enhanced Security





## Install SQL Server Management Studio (SSMS)





Microsoft | Docs Windows Microsoft Azure Visual Studio Office More

Docs / SQL / Tools / SQL Server Management Studio (SSMS)

## SQL Server Management Studio - Changelog (SSMS)

09/23/2018 • 57 minutes to read • Contributors

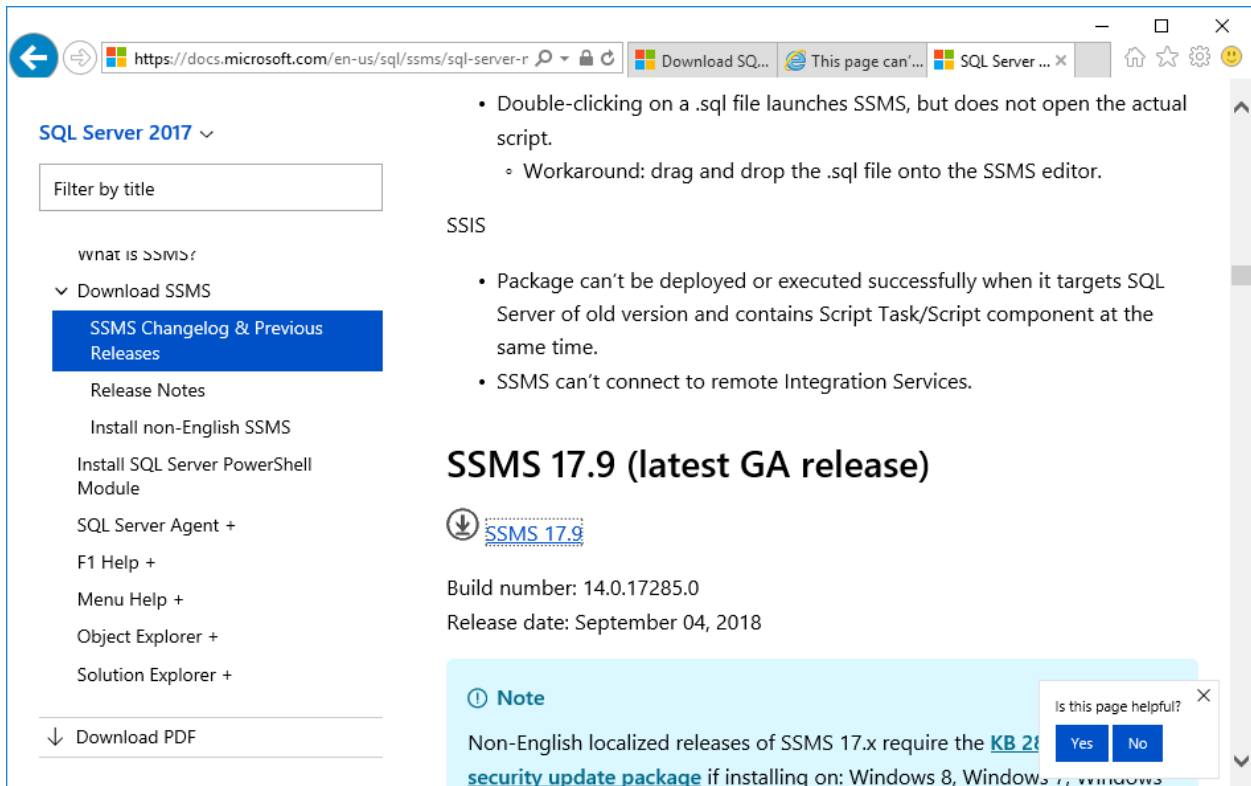
**In this article**

- SSMS 18.0 (preview 4)
- [SSMS 17.9 \(latest GA release\)](#)
- Previous SSMS releases
- SSMS 17.8.1
- SSMS 17.7
- SSMS 17.6
- SSMS 17.5
- SSMS 17.4
- SSMS 17.3
- SSMS 17.2

Filter by title

- Download SSMS
  - SSMS Changelog & Previous Releases**
  - Release Notes
  - Install non-English SSMS
  - Install SQL Server PowerShell Module
  - SQL Server Agent +
- Download PDF

Is this page helpful? Yes No



Microsoft | Docs Windows Microsoft Azure Visual Studio Office More

Docs / SQL / Tools / SQL Server Management Studio (SSMS)

## SSMS 17.9 (latest GA release)

Build number: 14.0.17285.0  
Release date: September 04, 2018

**Note**  
Non-English localized releases of SSMS 17.x require the [KB 2915364 security update package](#) if installing on: Windows 8, Windows 7, Windows Vista

Filter by title

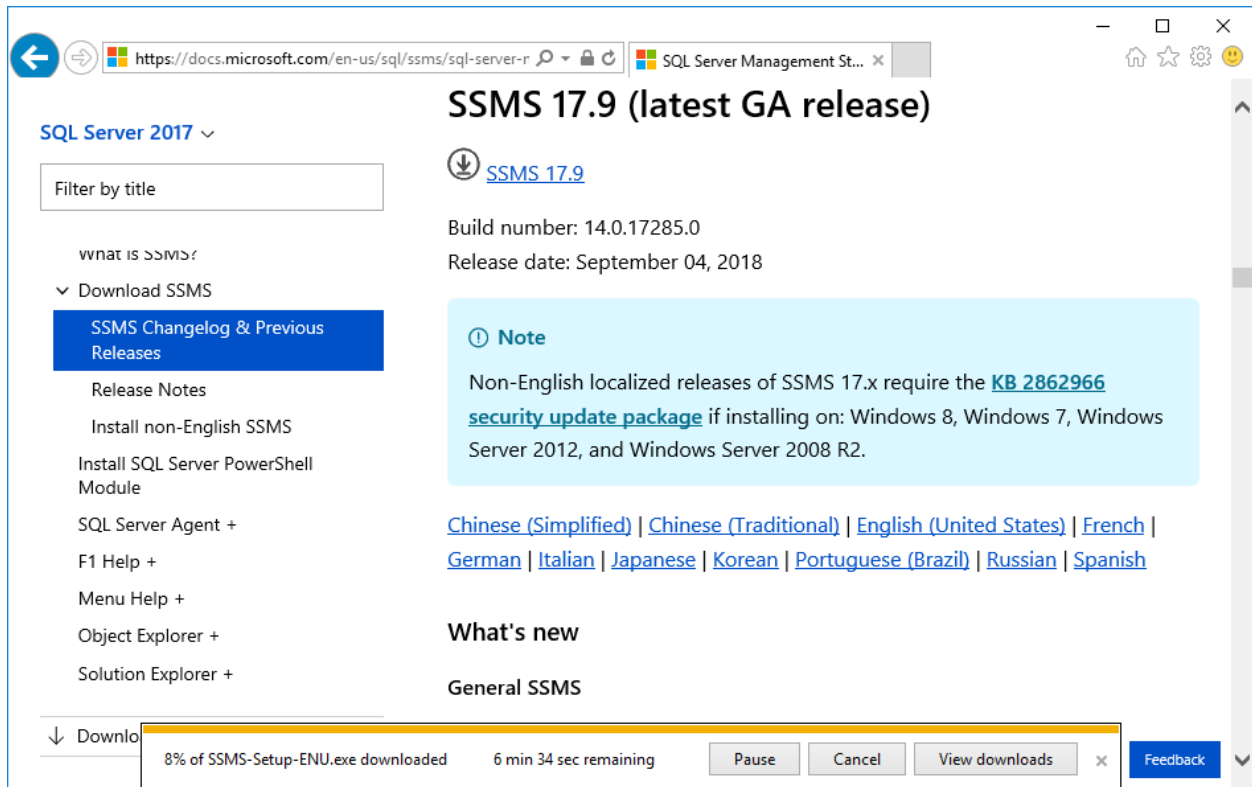
- Download SSMS
  - SSMS Changelog & Previous Releases**
  - Release Notes
  - Install non-English SSMS
  - Install SQL Server PowerShell Module
  - SQL Server Agent +
  - F1 Help +
  - Menu Help +
  - Object Explorer +
  - Solution Explorer +
- Download PDF

• Double-clicking on a .sql file launches SSMS, but does not open the actual script.  
• Workaround: drag and drop the .sql file onto the SSMS editor.

SSIS

- Package can't be deployed or executed successfully when it targets SQL Server of old version and contains Script Task/Script component at the same time.
- SSMS can't connect to remote Integration Services.

Is this page helpful? Yes No



SQL Server 2017 ▾

Filter by title

what is ssms?

▾ Download SSMS

- SSMS Changelog & Previous Releases**
- Release Notes
- Install non-English SSMS
- Install SQL Server PowerShell Module
- SQL Server Agent +
- F1 Help +
- Menu Help +
- Object Explorer +
- Solution Explorer +

## SSMS 17.9 (latest GA release)

📄 [SSMS 17.9](#)

Build number: 14.0.17285.0  
Release date: September 04, 2018

**Note**

Non-English localized releases of SSMS 17.x require the [KB 2862966 security update package](#) if installing on: Windows 8, Windows 7, Windows Server 2012, and Windows Server 2008 R2.

[Chinese \(Simplified\)](#) | [Chinese \(Traditional\)](#) | [English \(United States\)](#) | [French](#) | [German](#) | [Italian](#) | [Japanese](#) | [Korean](#) | [Portuguese \(Brazil\)](#) | [Russian](#) | [Spanish](#)

### What's new

#### General SSMS

Download

8% of SSMS-Setup-ENU.exe downloaded    6 min 34 sec remaining    Pause    Cancel    View downloads    Feedback



RELEASE 17.9

## Microsoft SQL Server Management Studio

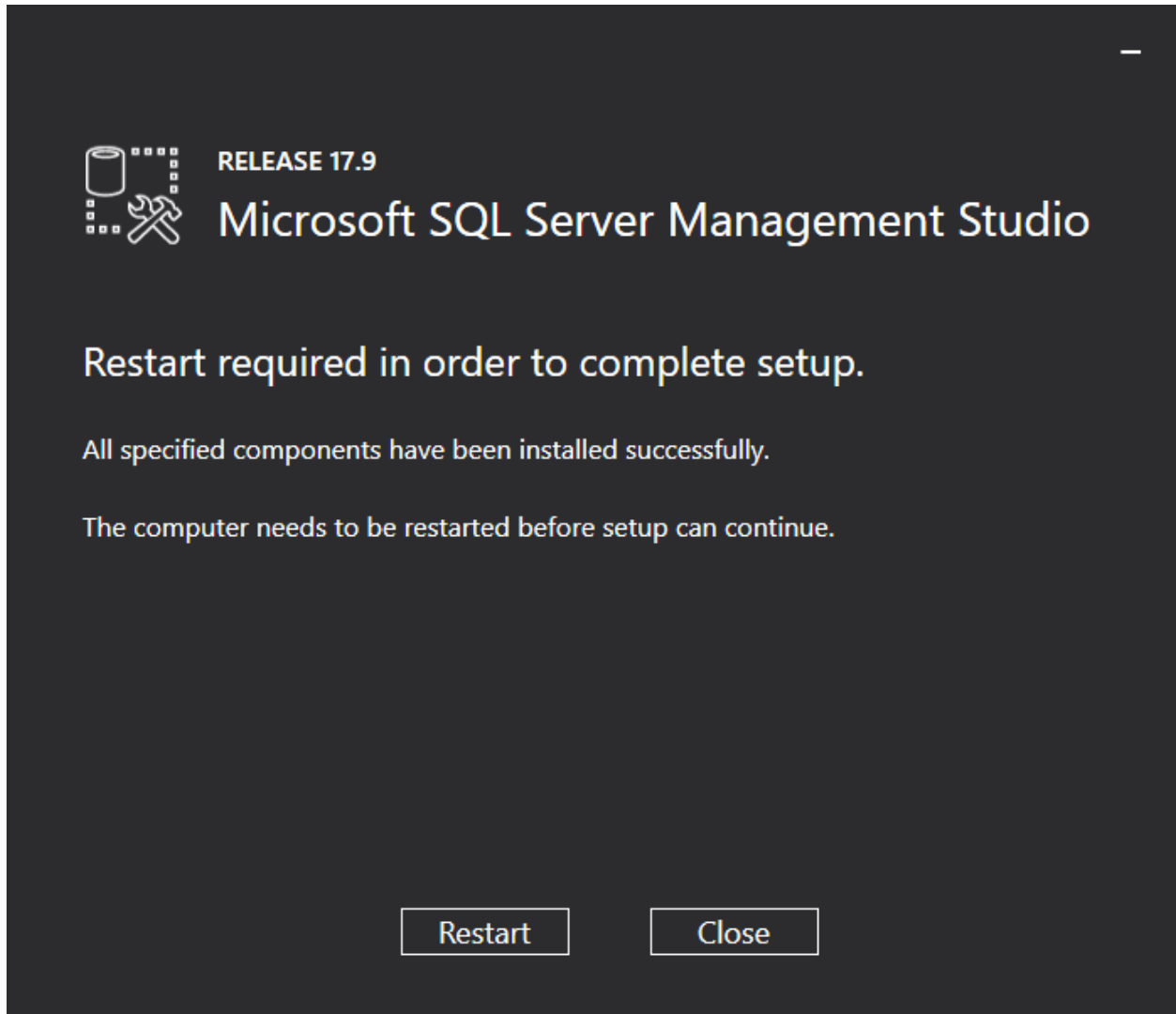
Welcome. Click "Install" to begin.


By clicking the "Install" button, I acknowledge that I accept the [License Terms](#) and [Privacy Statement](#).

SQL Server Management Studio transmits information about your installation experience, as well as other usage and performance data, to Microsoft to help improve the product. To learn more about data processing and privacy controls, and to turn off the collection of this information after installation, see the [documentation](#).

Install

Close



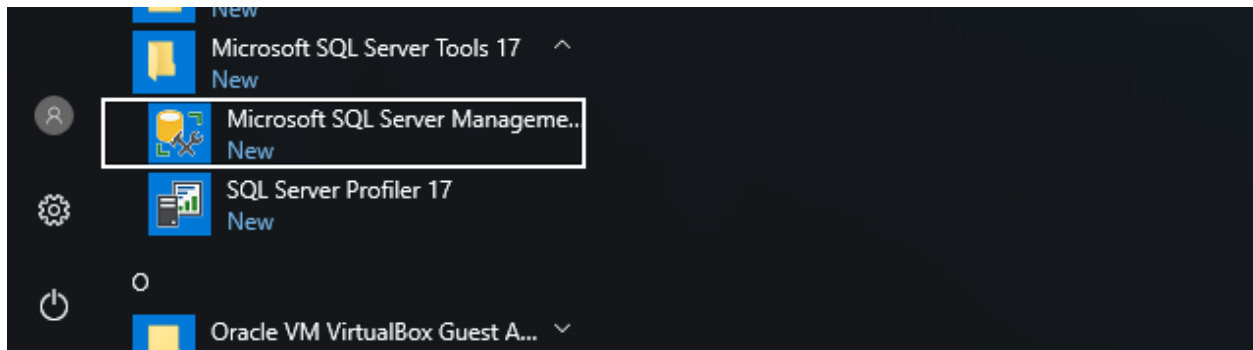
 **RELEASE 17.9**  
**Microsoft SQL Server Management Studio**

**Restart required in order to complete setup.**

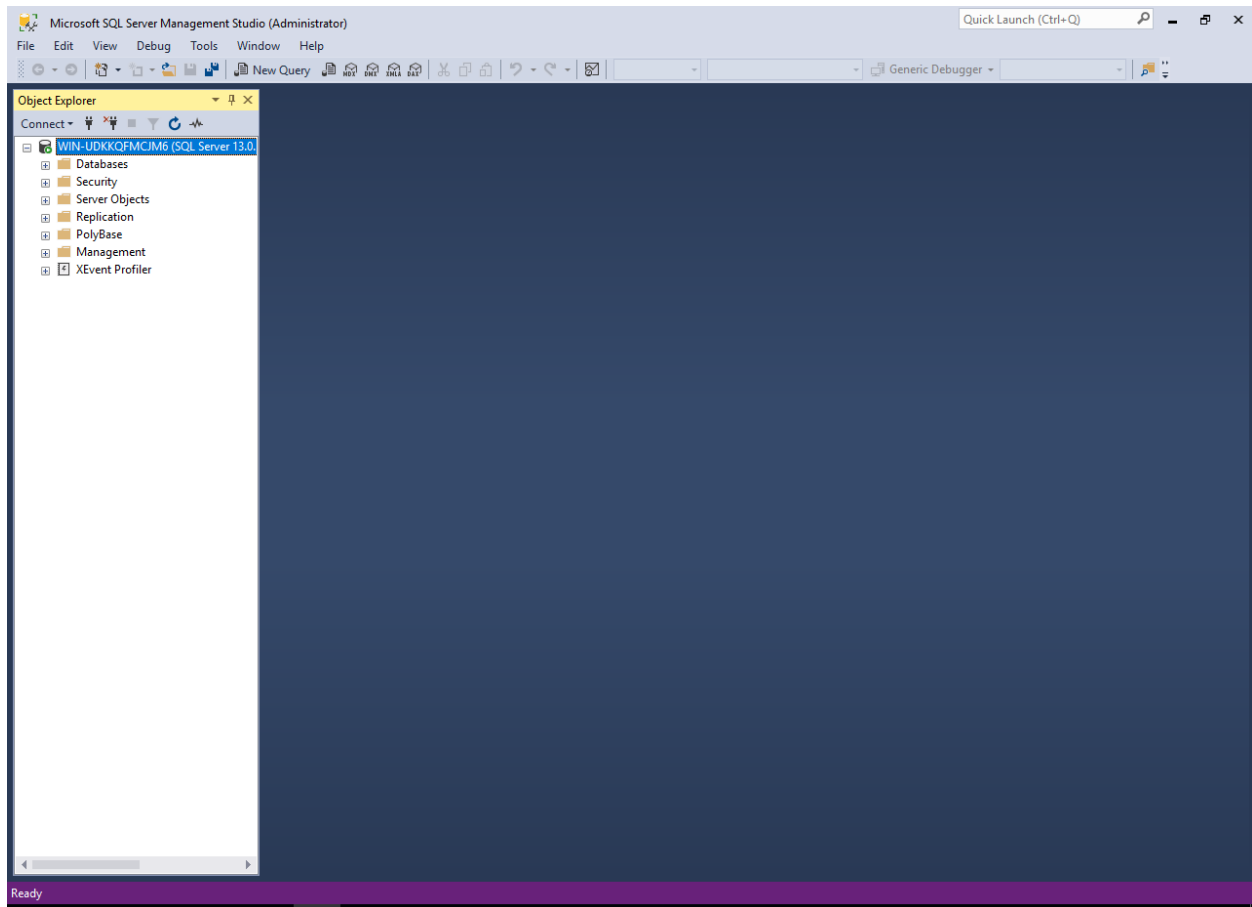
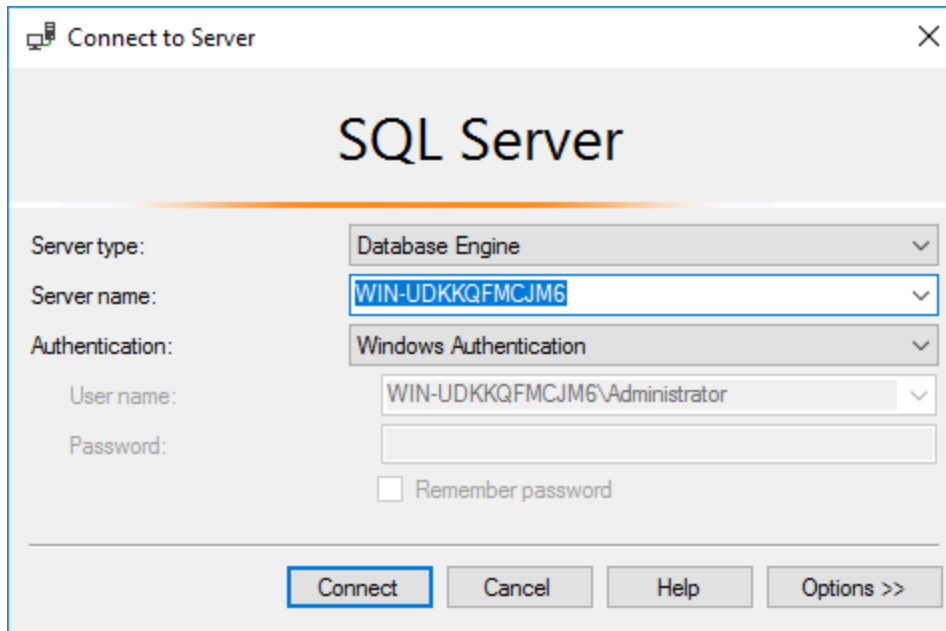
All specified components have been installed successfully.

The computer needs to be restarted before setup can continue.

[Restart](#) [Close](#)



- New
- Microsoft SQL Server Tools 17 ^  
New
- Microsoft SQL Server Manageme..**  
New
- SQL Server Profiler 17  
New
- Oracle VM VirtualBox Guest A... v



## SQL Management Studio.

Open a New Query from SQL Management Studio.

You'll want to enable the **xp\_cmdshell** stored procedure (Documented here: <https://docs.microsoft.com/en-us/sql/database-engine/configure-windows/xp-cmdshell-server-configuration-option?view=sql-server-2017> )

Copy and paste the SQL script below into the query window.

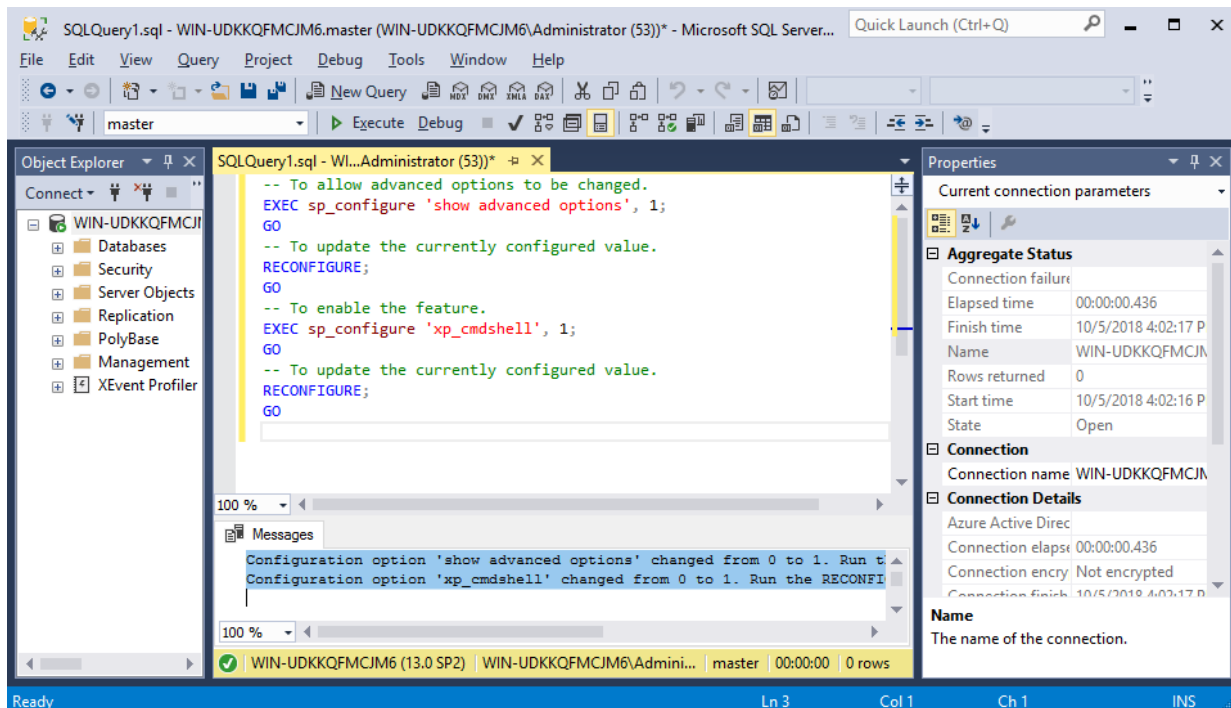
```
-- To allow advanced options to be changed.
EXEC sp_configure 'show advanced options', 1;
GO
-- To update the currently configured value.
RECONFIGURE;
GO
-- To enable the feature.
EXEC sp_configure 'xp_cmdshell', 1;
GO
-- To update the currently configured value.
RECONFIGURE;
GO
```

Click the Execute button to perform the entered script.

The resulting “Messages” pane should have the following messages...

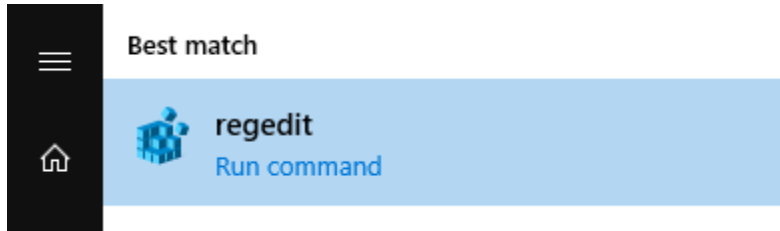
Configuration option 'show advanced options' changed from 0 to 1. Run the RECONFIGURE statement to install.

Configuration option 'xp\_cmdshell' changed from 0 to 1. Run the RECONFIGURE statement to install.

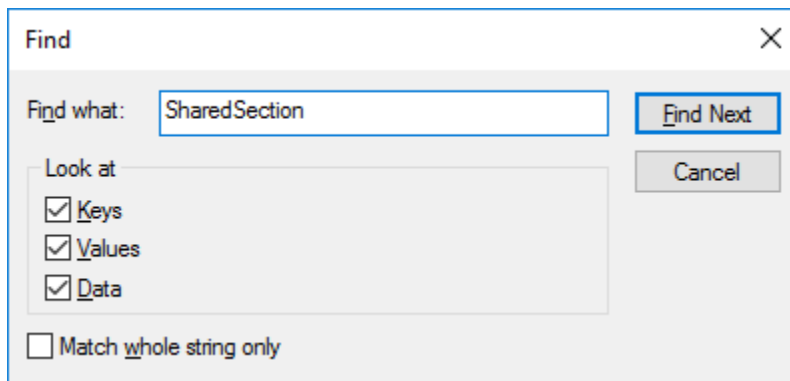


## Update Registry for “SharedSection” Setting

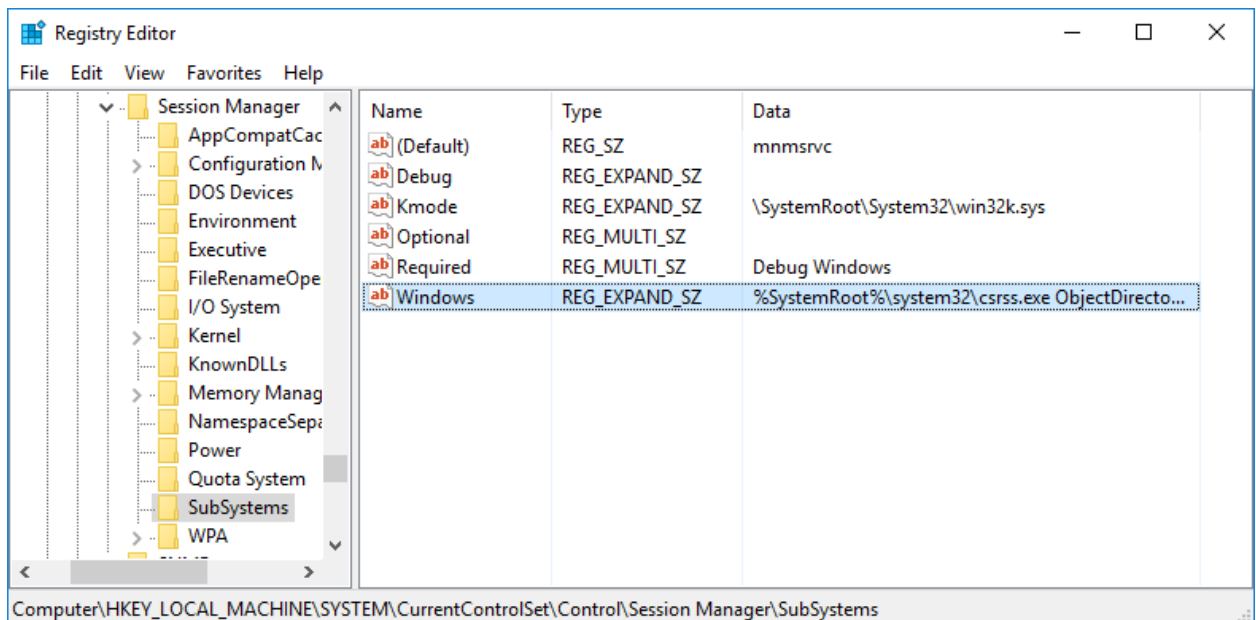
This setting is to allow larger number of spawned processes used by the SAP GUI interface (i.e., TekConsole SC)



Start the `regedit.exe` program.

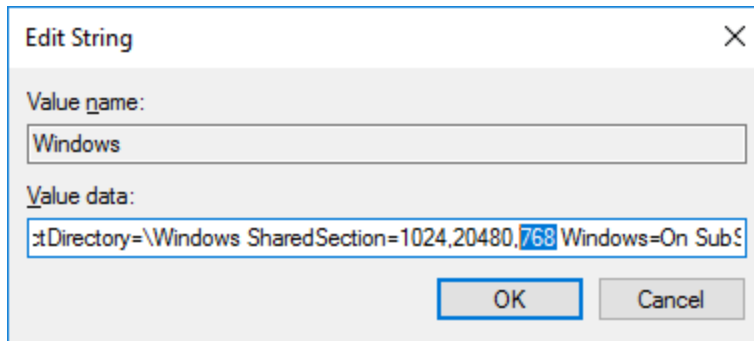


Search for the **SharedSection** string.

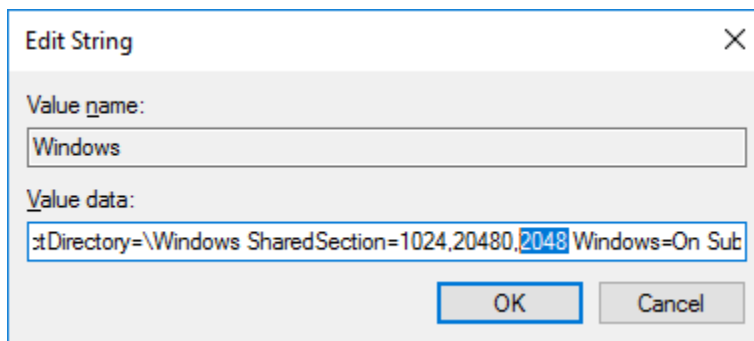


Or navigate directly to the key **LOCAL\_MACHINE\SYSTEM\CurrentControlSet\Control\Session Manager\SubSystems** and value **Windows**.





Edit the 3<sup>rd</sup> comma-separated numeric value after SharedSection=



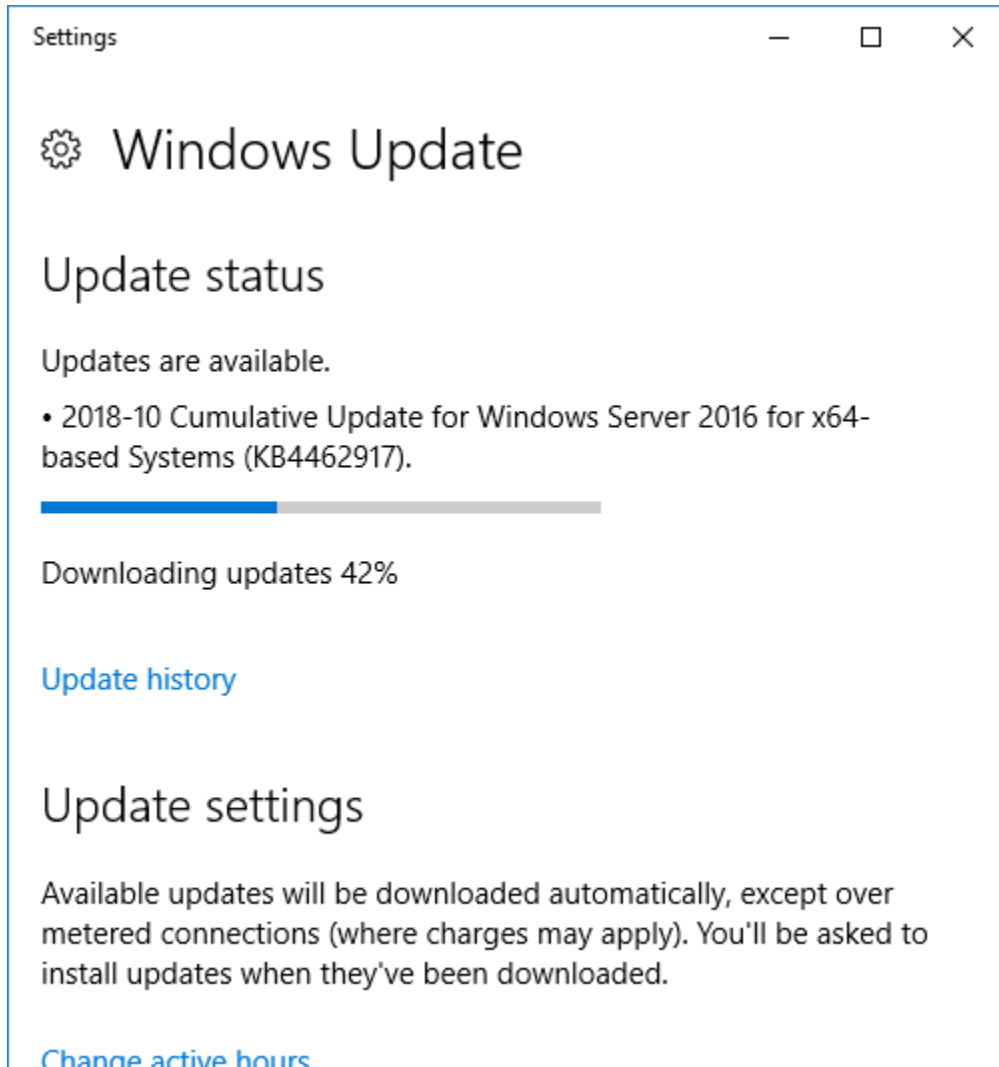
Update the value to 2048 (from 768).

Click OK to save the value.

**Note:** a reboot is required for this setting to take effect. Other acceptable values are 3072 or 4096.

## Check for OS Updates.

Apply any required updates.



If updates installed and require a restart, restart the Server.

Your Server is now ready to install MIS.